

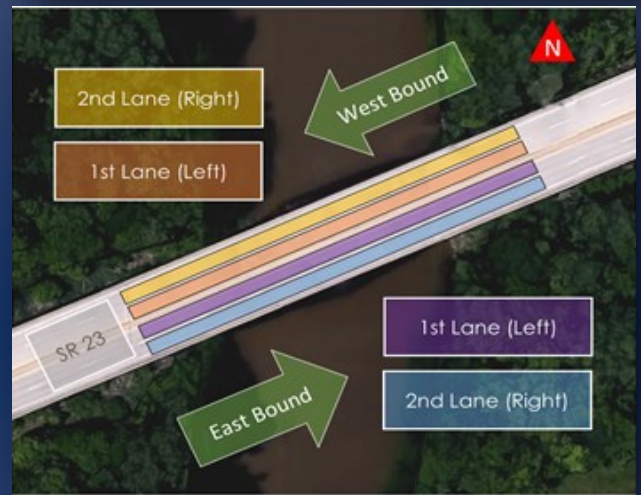


# PennDOT Infrared Bridge Deck Scanning

## SUMMARY

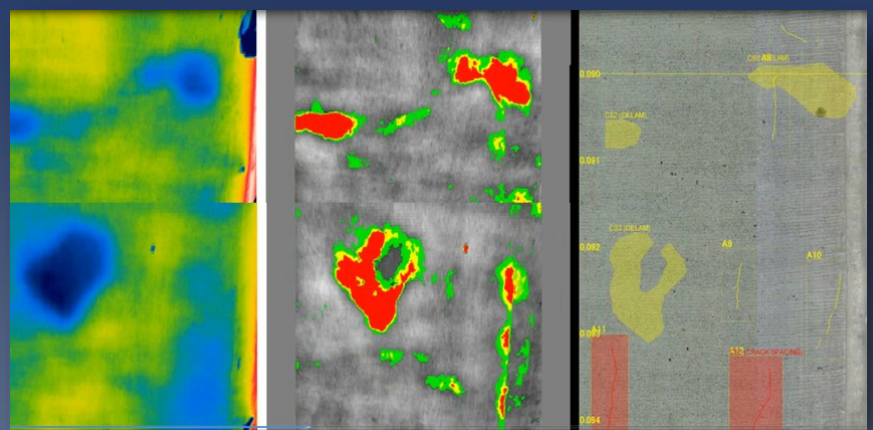
In 2016, NEXCO-West USA worked with Pennsylvania's Department of Transportation to quantify and map rebar level delamination in the top of a target bridge deck in Lancaster, PA. An analysis was produced based off visual and thermal data acquired at posted roadway speed limits.

Our field team also conducted a hands-on inspection of the bridge to help verify and supplement the NDE data collected. Quantities of deficient areas were finalized in a plan-view map and exported to a CAD file for delivery. The client used the CAD file to support their own reporting process to the bridge owner.



## OVERVIEW

<b>Client:</b>	PennDOT
<b>Contact info:</b>	Mr. Scott Stock sstock@mackinengineering.com (717-774-8900)
<b>Quantity:</b>	The total deck area is 45,360 sqft.
<b>Project period:</b>	May 2016 - Apr.2017



Original infrared data    Processed infrared data    2D visual scan

**NEXCO - West USA**  
8300 Boone Blvd. Suite 260  
Vienna, VA 22182

+1 (703) 734 - 0281  
info@w-nexco-usa.com  
www.w-nexco-usa.com